

All Sleeping Indian® wool garments have our customized logo embroidered on either the front, back shoulder or women's jacket sleeve.



Womenswear Fit Chart

	Misses				Womens			
	XS	S	M	L	W-S	W-M	W-L	W-XL
Bust	32-34	34-36	36-38	38-41	41-44	44-48	48-52	52-56
Waist	26-28	28-30	30-32	32-35	35-38	38-42	42-46	46-50
Hip	34-36	36-38	38-40	40-43	43-46	46-50	50-54	54-58
Sleeve	29 ¹ / ₂	30	30 ¹ / ₂	31 ³ / ₈	32 ¹ / ₄	33 ¹ / ₂	34 ¹ / ₄	35 ⁵ / ₈

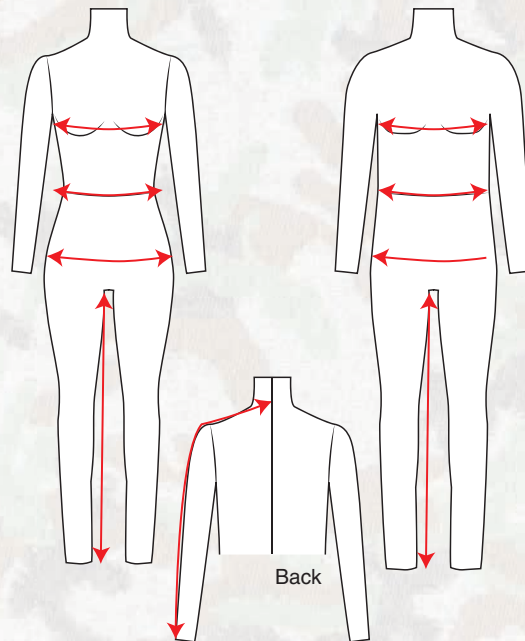
Misses sizes generally accommodate sizes 4-14

Womens sizes generally accommodate sizes 16-26

Menswear Fit Chart

	S	M	L	XL	2XL	3XL
Chest	35-38	38-41	41-44	44-47	47-51	51-55
Waist	28-31	31-34	34-37	37-40	40-44	44-48
Sleeve	33	34	35	36	37	37 ³ / ₄

Measuring



Bust/Chest: Measure around fullest part of chest, just under armpits, with chest expanded.

Waist: This measurement is taken from the natural waist, at the top of the pelvic bone. Use relaxed measurement.

(NOTE: this measurement is NOT taken at the waistline of your pants. You must measure at the natural waist)

Hip: Measure around the fullest part of the seat, near the top of the hip bone.

Sleeve: Extend arm at side, measure from center back of neck to shoulder point, then to wrist bone.

Inseam: Measure over pants, from crotch seam to instep.

**All measurements are noted in inches*

Pants (Relaxed Fit)

Our pants can be ordered in even sizes 28" to 50".

In an effort to accommodate any height, our pants ship un-hemmed unless otherwise requested.

Please provide a desired inseam measurement if you wish to receive your pants with a hem.

Fit Explanations

Fitted

These garments are tailored to fit close to the body while maintaining comfort. They are best worn over light under-layers.

Semi-Fitted

Designed with more room, for light to medium layering. If you intend to layer heavily under these garments, we suggest ordering one size larger.

Relaxed Fit

Our relaxed fit is designed for the layering of heavier pieces. If you DO NOT intend to layer this garment with heavy under-layers, we suggest ordering one size smaller.

Custom Orders

At Sleeping Indian, we have the ability to make minor modifications in length to the body and/or sleeves of our garments.

When ordering with customization, please call our customer service line Monday - Friday at (800) 971-1557, Extension 4 or 5.

Hours are 8am-5pm (C.S.T.).

*Please note that custom garments are non-refundable.